



*SUNDAY SEPTEMBER 27, 2020*

Marlin Travel is proud to be an Official Tour Operator Partner for the 47<sup>th</sup> running of the BMW Berlin Marathon. We have sent thousands of happy runners to Berlin to participate in this event.

We offer GUARANTEED MARATHON ENTRY PACKAGES to **Canadian Residents**. ALL packages INCLUDE Entry in the 2020 BMW Berlin Marathon and ChampionChip Rental Fee. (Note: Timing Chip MUST be returned within 2 hours of finishing the marathon. If you choose to keep your Chip, you will automatically be charged 35 Euro's).

Berlin is an incredible marathon, one of the 6 World Majors, and is one of the largest and most popular road races in the world. More World Records have been broken in Berlin than any other marathon; the course is flat and fast!

Run through the historical Brandenburg Gate and then through this fantastic city; the crowd support is amazing and the marathon is incredibly well organized.

**ENTRY ONLY:** Due to our contract with the BMW Berlin Marathon, we are unable to provide Marathon Entry by itself. It must be purchased as part of a travel package. We offer several packages which include flight and/or hotel.

**NON-ENTRANTS/SUPPORTERS:** Deduct \$500 from any of our package prices.



## **PACKAGES – in Canadian Dollars, including tax.**

### **PACKAGE #1 – BLOCK SPACE HOTELS – Sept. 25 to 29 2020- Four nights**

We have **BLOCKED SPACE** at these two hotels and the price is Guaranteed not to change. Room quantities are limited so please book early. Both hotels are very popular with our Canadian runners and for good reason- they offer excellent service, comfort and value.

Prices are per person, based on single (1 person in the room) or double (2 people sharing the room).

Prices are for four nights hotel and INCLUDE GUARANTEED MARATHON ENTRY and hotel taxes.

Four-night minimum stay (Sept 25 to 29) is required.

Once booked, no changes are permitted.

Extra nights are available upon request.

Package price is non refundable if you have to cancel for any reason.

We recommend and offer optional Cancellation Insurance for this reason.

**DEPOSIT is \$500 per person and final payment is due July 15 2020.**

## ADINA APARTMENT HOTEL Checkpoint Charlie -4.5 Stars. 1.52km to Marathon Start/Finish area.

Get comfy in a one-bedroom apartment complete with separate living room and bedroom, fully equipped kitchenette, washer/dryer. **INCLUDES: Breakfast daily, WIFI, full use of the Gym, Sauna, Jacuzzi.**

Located near historical area with restaurants, bars &

# SOLD OUT

Checkpoint Charlie in an amazing architecture, great shopping.

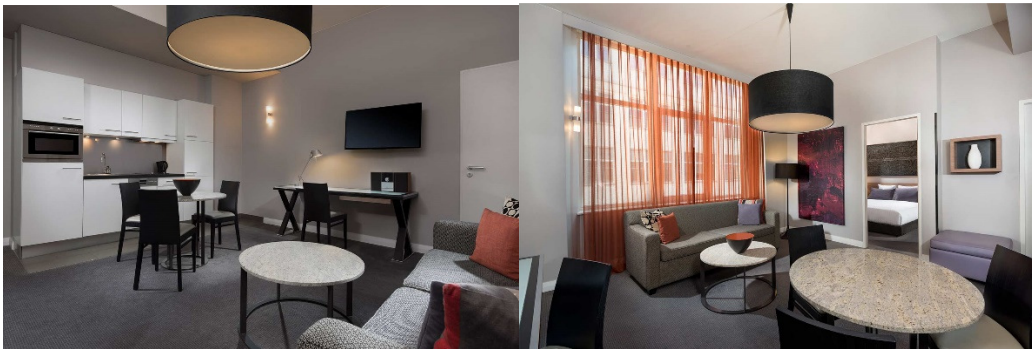
**BEDS: One King or**

**2 twin beds (your choice)**

**SINGLE OCCUPANCY: \$1910**

**DOUBLE OCCUPANCY: \$1325**

**Breakfast included.**



## ADINA APARTMENT HOTEL Mitte -4.5 Stars. 1.5km to Marathon Start/Finish area.

We have just added the sister property to the Adina Checkpoint Charlie. Same great amenities **PLUS** an indoor pool! Located in the historic Mitte area of Berlin near the main train station.

**BEDS: One King or 2 twin beds (your choice) Breakfast included.**

**SINGLE OCCUPANCY: \$1910**

**DOUBLE OCCUPANCY: \$1325**



**ONE-BEDROOM APARTMENT**

EN: Floorplan is indicative, actual room may differ from floorplan.  
DE: Dieser Grundriss ist ein Beispiel. Das tatsächliche Zimmer kann davon abweichen.

## HOTEL BERLIN – 4 stars. 2.21km to Marathon Start/Finish area.

Superior rooms are modern, spacious and comfortable. Rooms have small Fridges and Nespresso machines. **INCLUDES: Buffet Breakfast daily, Free WIFI, use of Gym and Sauna.**

Location is in central Berlin near the south end of the Tiergarten Park. Very close to bus and subway stops. The area is fairly quiet with a good selection of restaurants, shopping and attractions close by.

**BEDS:** Superior rooms have 2 twins or 1 king bed (your choice).

**SINGLE OCCUPANCY: \$1800**

**DOUBLE OCCUPANCY: \$1295**

Breakfast included.



## **PACKAGE #2 - FLIGHT & GUARANTEED MARATHON ENTRY September 24 to 29 2020**

Flight prices are constantly changing and it is impossible to print accurate rates before they change again. We are happy to send you a quote, so please contact us with your departure city and travel dates. Flights are available from any city in Canada and you may return from any city in Europe, should you wish to extend your stay after the Marathon.

**FULL PAYMENT IS DUE AT TIME OF BOOKING.**

Once booked, no changes are permitted.

Package price is non refundable if you have to cancel for any reason.

We recommend and offer optional Cancellation Insurance for this reason.

We work with all airlines and will research the best price for you based on your itinerary and dates.

**Sample Package prices INCLUDING GUARANTEED MARATHON ENTRY and all taxes.  
FOR ESTIMATION PURPOSES ONLY; WE WILL QUOTE YOU A FIRM PRICE UPON REQUEST.  
Prices are per person in Canadian Dollars.**

**Toronto – Air Canada – non-stop \$ 1775**

**Montreal – Air Canada (via Toronto) 1 stop \$1880**

**Halifax – Air Canada (via Toronto) 1 stop \$1940**

**Calgary – Air Canada (via Toronto) 1 stop \$1980**

**Calgary - KLM (via Amsterdam) 1 stop \$1970**

**Vancouver – Air Canada (via Toronto) 1 stop \$1880**

**Vancouver – KLM (via Amsterdam) 1 stop \$1900**

## **PACKAGE #3 - ALTERNATE HOTELS – 4 NIGHTS - September 25 to 29 2020 - Four nights**

Here is a selection of alternate hotels in Berlin which will be booked on an individual basis. Room rates and availability are NOT guaranteed until a booking is confirmed. We work with ALL hotels in Berlin; please ask for a quote on the hotel of your choice.

Prices are per person, based on single (1 person in the room) or double (2 people sharing the room). Prices are for four nights hotel and INCLUDE GUARANTEED MARATHON ENTRY and hotel taxes. Custom dates & extra nights are available upon request.

Prices are in Canadian Dollars.

Once booked, no changes are permitted.

Package price is non refundable if you have to cancel for any reason.

We recommend and offer optional Cancellation Insurance for this reason.

**FULL PAYMENT IS DUE AT TIME OF BOOKING.** You are required to pay a deposit of \$500 when you submit your application/booking form and the remainder will be charged once the hotel is confirmed (usually within 24 hours).

**RELEXA HOTEL STUTTGARTER HOF – 4 Stars – 1.35km to Marathon Start/Finish area**

BED: Queen bed (no rooms with 2 beds available)

SINGLE OCCUPANCY: \$1390

DOUBLE OCCUPANCY: \$1000

**BEST WESTERN AM SPITTELMARKT – 3 Stars – 3.74km to Marathon Start/Finish area.**

BED: 2 twin beds.

SINGLE OCCUPANCY: \$1990

DOUBLE OCCUPANCY: \$1300

BED: Double Bed

SINGLE OCCUPANCY: \$2135

DOUBLE OCCUPANCY: \$1370

**WESTIN GRAND BERLIN – 5 Stars – 800M to Marathon Start/Finish area**

BED: Queen bed or 2 twin beds (your choice)

SINGLE OCCUPANCY: \$2425

DOUBLE OCCUPANCY: \$1550

**BERLIN MARRIOTT – 5 Stars – 1.7km to Marathon Start/Finish area**

BED: King or 2 Double beds (your choice)

SINGLE OCCUPANCY: \$3275

DOUBLE OCCUPANCY: \$1950

Note: Customized packages are available for alternate dates/hotels. Please contact us directly for a customized quote.

## MARATHON ENTRY ON HOLD OPTION:

If you need more time to determine your Flight dates or alternate hotel dates, we can HOLD your Guaranteed Marathon Entry spot with a deposit of \$500 CAD. You will then have 90 days to firm up your dates/plans and choose your travel package.

NOTE: The World's largest trade fair (Inno Trans) will take place in Berlin during Marathon Week. Hotel rooms are already going fast. We strongly recommend early booking for all hotels.



## TRAVEL INSURANCE:

Travel Insurance is optional and can only be purchased at time of booking. Travel Insurance protects the NON-REFUNDABLE cost of your package, should you have to cancel for any unexpected reason. Insurance rates vary according to your age, cost of your package and length of your trip. Please contact us for a quote and complete details on the insurance coverage.

**CONCIERGE CLUB PLAN** – Coverage includes Trip Cancellation/Interruption, Cancel for any reason, Out of Province Emergency Medical, Baggage, Travel Accident, Flight Accident and more. Running related injuries ARE covered with this plan.

**NON-MEDICAL CONCIERGE CLUB PLAN** - Coverage includes Trip Cancellation/Interruption, Cancel for any reason, Baggage, Travel Accident, Flight Accident and more. Running related injuries ARE covered with this plan. This plan does NOT include Out of Province Emergency Medical Coverage.

## IMPORTANT INFORMATION TO KNOW BEFORE YOU BOOK

**ELIGIBILITY:** Guaranteed Entry Packages are available to CANADIAN RESIDENTS. You do not have to be a Canadian Citizen.

You must be 18 years or older to enter the 2020 BMW Berlin Marathon.

**CONFIRMATION:** Upon receipt of your completed application form, Marlin Travel will send you an email confirmation of your participation in the 2020 BMW Berlin Marathon.

**PACKAGE PICK UP:** Participants must pick up their own Bib Packets at the Expo in Berlin from Sept 24 to 26, 2020. Participants must show photo ID (Passport) to verify their identity as the registrant to whom the bib number was assigned. You will be sent a START CARD via email in late August which must be shown at the Expo in order to pick up your Bib and race materials. Each runner must personally pick up their own Bib.

**MARATHON GEAR:** BWM Berlin Marathon does not include t-shirts in their goody bags. You will be sent info on how to pre-purchase quality gear through Marlin Travel. You may also pre-purchase medal engraving, HD Race Video, massages etc.

## TERMS & CONDITIONS

Please read and understand the following terms and conditions regarding your package.

**Marathon Rules:** Please read the rules, you must agree to them in order to participate in the 2020 BMW Berlin Marathon.

<https://www.bmw-berlin-marathon.com/en/info-and-service/terms-of-participation/>

**Cancellation Policy:** All payments are non-refundable, no exceptions. Marlin Travel offers Optional Travel Insurance to cover you for the non-refundable cost of your package should you have to cancel for a valid reason. Once you have been accepted into the 2020 BWM Berlin Marathon, all fees are **NON-REFUNDABLE**.

**RESPONSIBILITY:** Eagle Inc O/A Marlin Travel (TICO#50020593) is a fully registered and licensed Travel Agency. Marlin Travel does not control or operate any transportation company, hotel or attraction and therefore cannot be held responsible for any injury, death, loss, default or damage, negligence or financial failure of any of these suppliers which is caused by the acts or omissions of these suppliers. All information contained herein is accurate at time of printing (October 30, 2019) and is subject to change due to circumstances beyond our control. Prices are subject to change (you will be offered a refund if the price increased by more than 7%). Reservations are based on availability on the day you submit your application. Space is limited.

**MARATHON ENTRY:** Entry Fee is non-refundable and non-transferable. Only individuals who have officially registered are permitted to participate in races organized by SCC EVENTS. Running without an official registration or 'running for someone else' is a violation of the terms and conditions for participating in SCC EVENTS competitions and will result in disqualification.

## FOR MORE INFORMATION PLEASE CONTACT:

**ELAINE TOMISZER**

Marlin Travel

1111 Elgin Street West, Northumberland Mall

Cobourg, ON K9A 5H7

T-905 377 0997

Direct line: 905 373 6433

[Elaine.tomiszer@marlintravel.ca](mailto:Elaine.tomiszer@marlintravel.ca)

Ontario Travel Industry Registration #50020593



## READY TO BOOK?

Here are the links to the application forms. Please complete and submit one form per person. We accept payment via Visa or Mastercard. If you wish to pay by E-transfer, please contact me for a customized form.

We will contact you to confirm your participation.

**2020 Berlin Marathon GUARANTEED ENTRY application form:**

<https://form.jotform.com/ETomiszer/BWMBerlinMarathon>

**2020 Berlin Marathon NON-ENTRANT/SUPPORTER application form:**

<https://form.jotform.com/ETomiszer/NonEntrant2020BerlinMarathon>

#### **MARATHON GEAR AND SERVICES:**

You can now pre-order Marathon Gear and Services, avoiding long line-ups at the Expo AND ensuring your sizing is available. If you choose to take advantage of pre-purchasing your gear, payment will be charged in CAD\$ when you submit this form. Deadline for pre-purchase orders is July 20 (or while quantities/sizes last).

<https://form.jotform.com/93024818054152>